


**KAESER**  
COMPRESSORS®



# MOBILAIR® Range

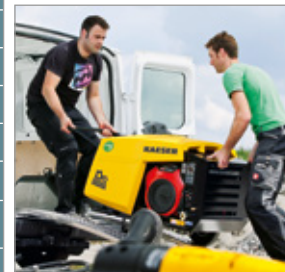
Portable compressors with the world-renowned SIGMA PROFILE   
Delivery volume 1.2 to 48.1 m<sup>3</sup>/min

[www.kaeser.com](http://www.kaeser.com)

## Alternative drives – Petrol engine or electric motor

Model			M 13	M 17 <sup>*)</sup>	M 17	Alternative electric drive
						M 13E
Flow rate at working pressure	7 bar	m <sup>3</sup> /min	1.2	1.6	–	1.2
	100 psi	cfm	42	57		42
	10 bar	m <sup>3</sup> /min	1.0	–	–	1.0
	145 psi	cfm	35			35
	12 bar	m <sup>3</sup> /min	–	–	–	0.9
	175 psi	cfm				32
	13 bar	m <sup>3</sup> /min	0.85	–	–	0.85
	190 psi	cfm	30			30
	15 bar	m <sup>3</sup> /min	–	1.0	1.0	0.75
215 psi	cfm	35		35	27	
Engine / motor			Honda GX 630	Honda GX 630	Honda GX 630	Siemens
Rated engine / motor power		kW	15.5	15.5	15.5	7.5
Compressed air treatment			○	○	○	○

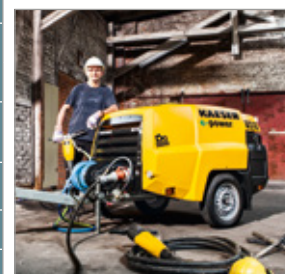
\* Only for export outside the EU



## Compact machines – With Anti-Frost Control

Model							Alternative electric drive			
							M 27E	M 31E	M 50E	
Flow rate at working pressure	7 bar	m <sup>3</sup> /min	2.0	2.6	2.9	3.15	5.0	2.6	3.15	5.0
	100 psi	cfm	71	92	100	110	180	92	110	180
	10 bar	m <sup>3</sup> /min	–	2.1	–	2.6	–	–	2.6	3.8
	145 psi	cfm		74		92			92	135
	12 bar	m <sup>3</sup> /min	–	1.9	–	2.3	–	–	2.3	–
	175 psi	cfm		67		81			81	–
	14 bar	m <sup>3</sup> /min	–	1.6	–	1.9	–	–	1.9	–
	200 psi	cfm		57		67			67	–
Engine / motor			Kubota D722	Kubota D1105	Kubota D1105	Kubota D1105T	Kubota V1505T	Siemens	Siemens	Siemens
Rated engine / motor power		kW	14.7	18.2	18.2	23.7	32.5	15	22	25
Compressed air treatment			–	○	○	○	○	○	○	○
Generator option		kVA	–	6.5	–	6.5	–	–	–	–

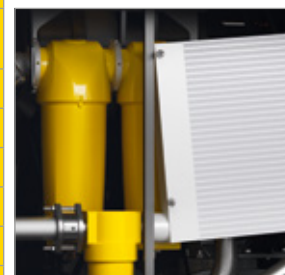
\* Only for export outside the EU



## Exceptional versatility – Wide range of equipment options

							Low emission ZONE			
Model							M 58utility	M 59	M 65	M 82
Flow rate at working pressure	7 bar	m <sup>3</sup> /min	5.6	5.4	7.0	10.6	5.1	5.5	6.6	8.4
	100 psi	cfm	200	190	250	375	180	195	230	295
	10 bar	m <sup>3</sup> /min	–	4.7	5.4	8.5	4.35	4.7	5.6	6.8
	145 psi	cfm		165	190	300	155	165	195	240
	12 bar	m <sup>3</sup> /min	–	–	–	7.2	–	–	–	6.1
	175 psi	cfm				255				215
	14 bar	m <sup>3</sup> /min	–	–	–	6.4	–	3.8	4.6	5.5
	200 psi	cfm				225				135
Engine			Kubota V2403	Kubota V2403	Kubota V2003T	Kubota V3800 Di-T	Kubota V2403-CR	Hatz 3H50TICD	Kubota V2403CR-T	Kubota V3307-CR-T
Rated engine power		kW	36	36	43.3	71.7	35.3	43.5	47.9	54.6
Compressed air treatment			–	○	○	○	○	○	○	○
Generator option		kVA	–	–	–	8.5 / 13	–	8.5 / 13	–	8.5 / 13

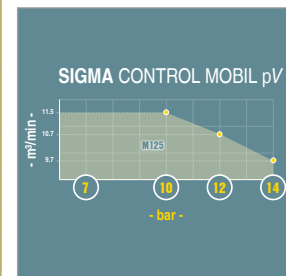
\* Only for export outside the EU



## Portable powerhouses – For continuous operation under tough conditions

Model			Low emission ZONE			
			M 135 <sup>1)</sup>	M 170 <sup>1)</sup>	M 125	M 171
Flow rate at working pressure	7 bar	m³/min	–	–	–	–
	100 psi	cfm	–	–	–	–
	8.6 bar	m³/min	–	17.0	–	17.0
	125 psi	cfm	–	600	–	600
	10 bar	m³/min	13.0	15.5	11.5	15.5
	145 psi	cfm	460	550	405	550
	12 bar	m³/min	12.0	13.5	10.7	13.5
	175 psi	cfm	425	475	380	475
	14 bar	m³/min	10.5	11.5	9.7	11.5
	200 psi	cfm	370	405	345	405
Engine			Deutz TCD 2013 L04	Deutz TCD 2012 L06	Deutz TCD 4.1 L04	Deutz TCD 6.1 L06
Rated engine power		kW	122	128	105	129
Compressed air treatment			○	○	○	○
Generator option		kVA	–	–	13	–

<sup>1)</sup> Only for export outside the EU



P.25AUS - Specifications subject to change without notice. .1722

## Large compressors

– Savings with SIGMA CONTROL SMART or SIGMA CONTROL MOBIL

Model			Low emission ZONE				Alternative electric drive		
			M 210 <sup>1)</sup>	M 235 <sup>1)</sup>	M 250 <sup>1)</sup>	M 450 <sup>1)</sup>	M 255	M 250E	M 255E
Flow rate at working pressure	7 bar	m³/min	21.2	–	–	–	–	–	
	100 psi	cfm	750	–	–	–	–	–	
	8.6 bar	m³/min	19.7	23.3	26.3	48.1	26.5	25.0	
	125 psi	cfm	700	825	930	1700	950	885	
	10 bar	m³/min	18.0	22.6	25.0	44.6	24.8	20.4	
	145 psi	cfm	640	800	885	1575	875	720	
	12 bar	m³/min	–	19.8	22.5	–	–	–	
	175 psi	cfm	–	700	795	–	–	–	
	14 bar	m³/min	–	18.1	20.0	37.7	19.7	16.2	
200 psi	cfm	–	640	705	1330	695	570		
Engine / motor			Caterpillar C 6.6	Cummins QSB 6.7	Mercedes-Benz OM 926 LA	Mercedes-Benz OM 460 LA	Cummins B6.7	Siemens	Siemens
Rated engine / motor power		kW	146	201	210	348	210	132	160
Compressed air treatment			○	○	○	○	○	○	

<sup>1)</sup> Only for export outside of the EU



**KAESER COMPRESSORS Australia Pty. Ltd.** – Locked Bag 1406 – Dandenong South – Vic. 3164 – 45 Zenith Road – Dandenong – Vic. 3175 – Phone: +61 39791 5999 – Fax: +61 39791 5733  
www.kaeser.com – E-mail: info.australia@kaeser.com

**KAESER COMPRESSORS NZ Limited** – PO BOX 301261 – Albany – Auckland 0752 – 18B Tarndale Grove – Albany – Auckland 0632 – Phone +64 9 941 0499  
www.kaeser.com – E-mail: info.newzealand@kaeser.com